



# INDIANAPOLIS AIRPORT AUTHORITY

2008 BUDGET  
Municipal Corporations Committee  
August 9, 2007



## AGENDA

- Indianapolis Airport Introductions
- New Indianapolis Airport Program Update
- Indianapolis Airport Operations Overview
- 2008 Budget Review

2



## INTRODUCTIONS

- *John J. Kish, Executive Director*
- *Robert A. Duncan, Airport Director*
- *Marsha Stone, Finance Director*

3



## New Indianapolis Airport Program Update

John J. Kish, Executive Director

4



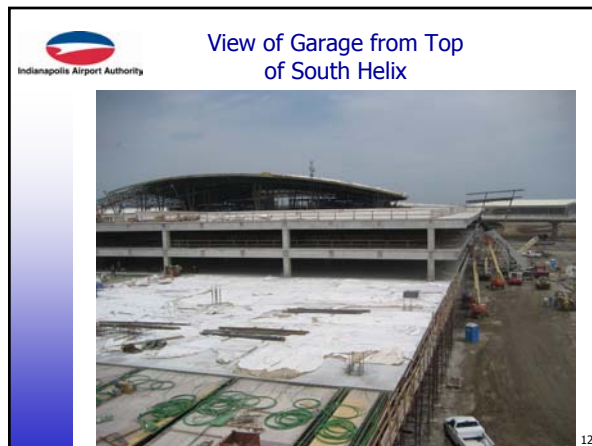
5



## Aerial July 16, 2007



6





14



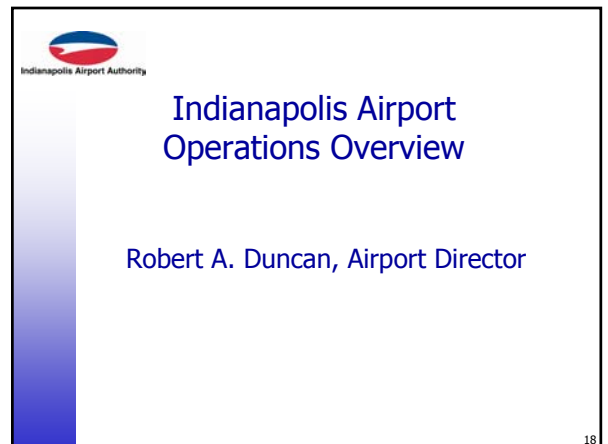
15



16



17



18

**IND: Facts & Stats**

- Landed weights as of June 2007 (year-to-date) approximately 50% cargo, 50% passenger
- IND is the 8th largest cargo airport in North America (*ACI-NA, 2006*)
- IND is the 20th largest cargo airport in the world (*ACI, 2006*)
- FedEx operates their 2nd largest worldwide hub from IND (*FedEx*)
- In 2006, IND accommodated 8.1 million total passengers and approximately 1.1 million tons of cargo
- IND completed its 7th consecutive "No Discrepancy" Part 139 inspection report
- Anthem Prescription Management, LLC (Anthem), a division of WellPoint Inc., signs new lease to occupy 120,000 square feet at the Indianapolis Maintenance Center (IMC) in December 2006 as location for specialty pharmacy division

19

**Passenger Service Overview**

**2007**

- Enplanements rebound in 2007 with a 2.5% increase compared to 1<sup>st</sup> half 2006.
  - Average Daily Seats for 1<sup>st</sup> half of 2007 are up 2.7% from 2006
  - Average Daily Departures for 1<sup>st</sup> half of 2007 are 2.8% from 2006.

**Domestic Service Summary\*\***

	June 2007	June 2006
Flights	183	186
Seats	16,082	15,996
Nonstop Destinations	38	38

*\*\*Note, this is domestic service only and does not include international service*

20

**Diversified Carrier Mix**

	Available Domestic Seats	
	June 2007	June 2006
Northwest	24.2%	25.1%
US Airways / America West	15.5%	15.3%
Southwest	13.6%	13.7%
AirTran	10.8%	9.9%
American	10.7%	10.7%
Delta	7.9%	8.7%
United	7.1%	6.3%
Continental	6.4%	6.3%
Frontier	3.2%	3.2%
Midwest	0.6%	0.8%

**Enplanements - Rolling 12 Months Ended June 2007**

21

**183 Daily Departures Serving 38 Destinations**  
(as of June 2007)

22


**2008 Budget Review**

Marsha Stone, Finance Director

23

**Unique Nature of Airport Financing**

24




## 2008 Capital Budget

(All Numbers are in '000's)

Subtotal By Category	
- Midfield Terminal	\$ 217,963
- Revenue Development	50,562
- Capacity	29,113
- Noise	7,460
- Environmental	6,444
- Other	5,458
- Information Technology	5,274
- Reliever Airports	5,150
- New Security Projects	4,326
- Safety	2,503
- Vehicular Equip. Replacement	1,475
- Non-Airfield Roadways	-
<b>Total</b>	<b>\$ 335,728</b>

25




## 2008 Capital Funding

(\$000)

Federal and State Grants	\$ 16,350
Transfers and Interest	16,285
Commercial Paper / Bond Proceeds	300,593
Proceeds from Land Sales / Other	2,500
<b>TOTAL</b>	<b>\$ 335,728</b>

26




## 2008 Revenue Overview

(\$000)

	2007 Budget	2007 Forecast	2008 Budget
<b>Operating Revenue</b>			
Airline Revenue	\$41,149	\$39,429	<b>\$43,282</b>
Non-Airline Revenue	59,864	62,889	<b>69,088</b>
Other Revenue (A)	<u>82,108</u>	<u>85,341</u>	<u>79,764</u>
<b>Total</b>	<b>\$183,121</b>	<b>\$187,659</b>	<b>\$192,134</b>

(A) Includes PFC & CFC financing, Lease Rentals, etc.

27




## System Fund Expenses

(\$000)

	2007 Budget	2007 Forecast	2008 Budget
Personal Services	\$25,927	\$25,588	<b>\$26,309</b>
Contractual Services	12,012	12,348	<b>13,024</b>
Supplies, Materials & Other	7,450	7,455	<b>6,031</b>
New Indianapolis Airport	-	-	<b>5,487</b>
Indpls Maint Ctr (IMC)	<u>11,807</u>	<u>11,690</u>	<u>11,316</u>
Total Operating Expenses	\$57,196	\$57,081	<b>\$62,167</b>
Debt Service and Other	<u>128,106</u>	<u>127,763</u>	<u>160,268</u>
<b>Total Airport System Fund</b>	<b>\$185,302</b>	<b>\$184,844</b>	<b>\$222,435</b>

28




## Unaudited Diversity Spending 2006/2007 YTD Comparison

	\$ Spent		% of Total Spending*	
	2006	2007 YTD	2006	2007 YTD
<b>Operating</b>				
MBE	\$ 2,467,617	\$ 3,231,497	16.1%	27.3%
WBE	862,993	788,816	5.6%	6.7%
<b>Capital (non New Indianapolis Airport)</b>				
MBE	\$ 6,179,716	\$ 2,070,250	19.9%	13.4%
WBE	1,817,482	1,967,295	5.9%	12.7%

\* calculated based on applicable costs

29



## New IND Diversity Spending Through June 30, 2007

Construction	Commitments	%	Payments	%
MBE	\$80,939,201	13.04%	\$40,578,752	11.29 %
WBE	\$33,248,538	5.36 %	\$15,817,819	4.40 %
Professional Services				
MBE	\$54,050,799	24.52%	\$38,929,722	23.95 %
WBE	\$16,017,085	7.27 %	\$11,789,508	7.25 %
Total M/WBE	\$184,255,623	21.91%	\$107,115,801	20.53%
All Contracts/ Payments	\$841,059,792		\$521,838,562	

30

prepare for arrival.



**The New Indianapolis Airport  
Opening Late 2008**